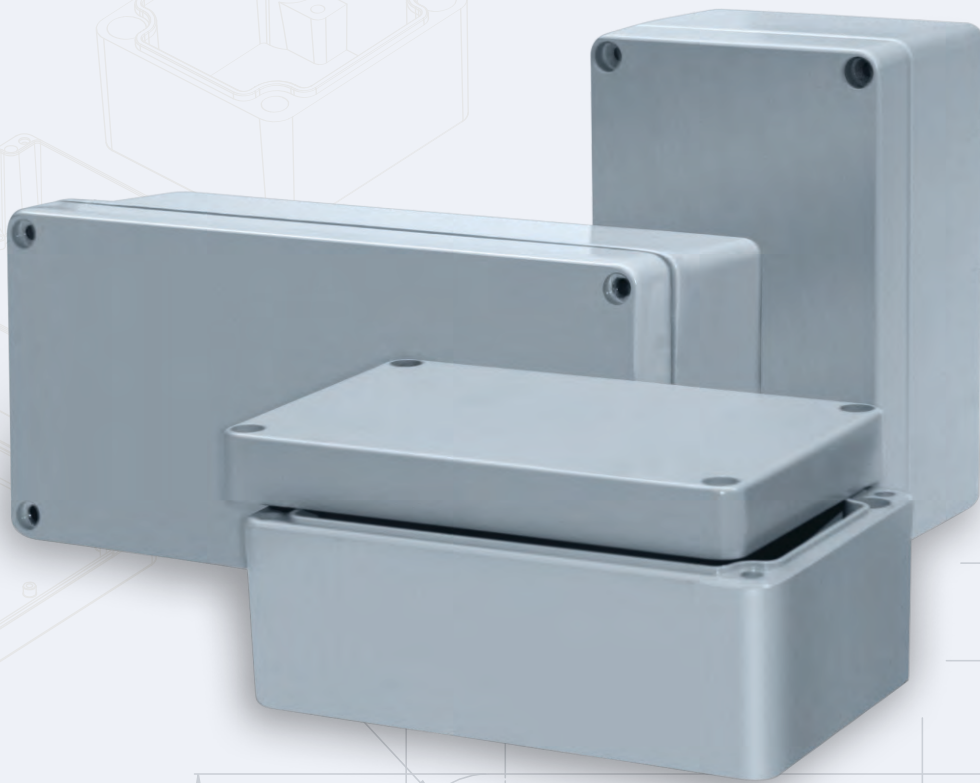


aluEiN™

aluminium Die-cast Enclosure





Technical Data Sheet :

Die-cast Aluminium Enclosure

- Material: Al Si 12, as per DIN EN 1706
- Components: Fastening threads M4 / M6 in the enclosure bottom.
- Ingress protection: IP66 / IP67 / IP68 as per IEC 60529 and IP69K as per DIN 4050-1993
- Gasket: Neoprene gasket (-40°C to +110°C)
- Lid Screws: Stainless Steel 1.4301 (A2), captive

- Surface: Painted / Non-Painted
- Standard Color: RAL 7001, 7031, 7032, 7035, 7038, Black RAL 9004

Optionally available:

- External Mounting Bracket: Stainless Steel 1.4301 (A2)
- Mounting Plates: Sheet Steel, galvanized
- Gasket: Silicon gasket (-50°C to +135°C)
- Surface: Corrosion protection, special colors
- Certified: UL, IECEx, Ex

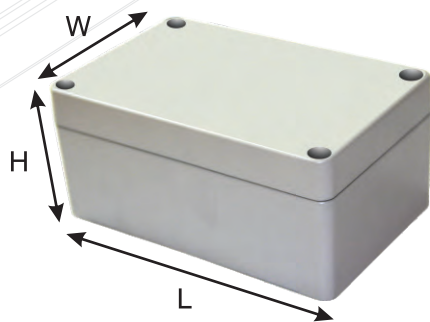
Approvals



Specification sheet with Accessories

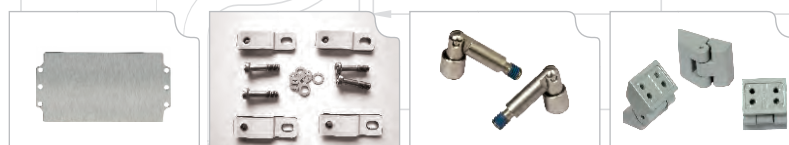
Raychem Part No.	Y--> Yes			Standard Accessories						Certification						
	Sizes-Dimensions External			Moun- ting Plate	M6 External Brackets	External Hinges	Internal Hinge	DIN rail for terminals		Silicon Gasket	IP 66	IP 67	IP 68	Impact Test IK	EMC	EX
	Length	Width	Height					TS15	TS35							
RJ01	50	45	30	-	-	-	-	-	-	Y	Y	-	-	IK 09	Y	-
RJ02	98	64	34	-	-	-	-	-	-	Y	Y	Y	Y	IK 09	Y	Y
RJ03	150	64	34	-	-	-	-	-	-	Y	Y	Y	Y	IK 09	Y	Y
RJ04	58	64	34	-	-	-	-	-	-	Y	Y	Y	Y	IK 09	Y	Y
RJ05	75	80	57	Y	-	-	-	Y	-	Y	Y	Y	Y	IK 09	Y	Y
RJ06	125	80	57	Y	-	-	-	Y	-	Y	Y	Y	Y	IK 09	Y	Y
RJ07	175	80	57	Y	-	-	-	Y	-	Y	Y	Y	Y	IK 09	Y	Y
RJ08	250	80	57	Y	-	-	-	Y	-	Y	Y	Y	Y	IK 09	Y	Y
RJ09	100	100	81	Y	Y	Y	-	Y	-	Y	Y	Y	Y	IK 09	Y	Y
RJ10	160	100	81	Y	Y	Y	-	Y	-	Y	Y	Y	Y	IK 09	Y	Y
RJ11	122	120	81	Y	Y	Y	-	-	Y	Y	Y	Y	Y	IK 09	Y	Y
RJ21	220	120	81	Y	Y	Y	-	-	Y	Y	Y	Y	Y	IK 09	Y	Y
RJ22	122	120	91	Y	Y	Y	-	-	Y	Y	Y	Y	Y	IK 09	Y	Y
RJ12	220	120	90	Y	Y	Y	-	-	Y	Y	Y	Y	Y	IK 09	Y	Y
RJ36	140	140	90	Y	Y	Y	Y	-	Y	Y	Y	Y	Y	IK 09	Y	-
RJ37	200	140	90	Y	Y	Y	Y	-	Y	Y	Y	Y	Y	IK 09	Y	-
RJ15	160	160	91	Y	Y	Y	Y	-	Y	Y	Y	Y	Y	IK 09	Y	Y
RJ13	260	160	90	Y	Y	Y	Y	-	Y	Y	Y	Y	Y	IK 09	Y	Y
RJ14	360	160	90	Y	Y	Y	Y	-	Y	Y	Y	Y	Y	IK 09	Y	Y
RJ28	180	180	100	Y	Y	Y	Y	-	Y	Y	Y	Y	Y	IK 09	Y	-
RJ29	280	180	100	Y	Y	Y	Y	-	Y	Y	Y	Y	Y	IK 09	Y	-
RJ19	200	230	110	Y	Y	Y	Y	-	Y	Y	Y	Y	Y	IK 09	Y	Y
RJ17	280	230	110	Y	Y	Y	Y	-	Y	Y	Y	Y	Y	IK 09	Y	Y
RJ18	330	230	111	Y	Y	Y	Y	-	Y	Y	Y	Y	Y	IK 09	Y	Y
RJ30	200	230	180	Y	Y	Y	Y	-	Y	Y	Y	Y	Y	IK 09	Y	Y
RJ20	330	230	180	Y	Y	Y	Y	-	Y	Y	Y	Y	Y	IK 09	Y	Y
RJ31	400	310	110	Y	Y	Y	Y	-	Y	Y	-	-	-	IK 09	Y	-
RJ32	400	310	180	Y	Y	Y	-	-	Y	Y	-	-	-	IK 09	Y	-
RJ33	600	310	110	Y	Y	Y	-	-	Y	Y	-	-	-	IK 09	Y	-
RJ34	600	310	180	Y	Y	Y	-	-	Y	Y	-	-	-	IK 09	Y	-
RJ35	400	230	110	Y	Y	Y	-	-	Y	Y	-	-	-	IK 09	Y	-

Note: Viton gasket available on request



Assembly of Accessories:

Mounting Plates, Mounting Brackets, Internal Hinges, External Hinges.



Customized Services:

Mechanical Processing

- Drilling
- Milling
- Tapping
- Profile Milling
- Laser Cutting
- All VMC Operations



Value Added Services

- Screen Printing
- Engraving
- Pad Printing
- Lacquering
- Painting
- Special Powder Coating
- Assembly with Cable Glands

We provide above services on the boxes as per specific requirements.

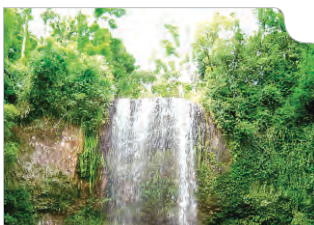


Quality Assurance:

-  Raychem RPG has built necessary resources in terms of people and equipment and a above all, an organization, which guarantees efficient use of these resources.
-  Various Machines for Measurements and Testing are available to ensure conformance to Quality Specifications.



Environment, Health & Safety



Protecting Today to create a better tomorrow together

Raychem RPG is focused on reducing environmental footprints and improving performance. All the manufacturing sites of Raychem RPG are ISO 14001 and OHSAS 18001 Certified.

Applications:



LOCOMOTIVES

In modern cabins of Locomotives where reliability & durability are the key requirements which need higher IP rated Aluminium enclosures. These enclosures are integral parts of the control panels & signal distribution system in locomotives.

MINING

Mining equipments such as Trucks, Lifters, Trolleys, Earthmovers need higher safety of connections against rough environments.



PROCESS CONTROL

Application such as automated process controls, machine operation controls in power plants, in energy metering applications & food Processing industry, needs IP protected Aluminium enclosures.

AUTOMATION

Automation designed for a variety of industrial applications such as lifting equipment and heating and ventilation (HVAC) applications.



CRANE HOISTING

In modern cabins of Cranes of various types where reliability & durability are the key requirements which need higher IP rated Aluminium enclosures. These enclosures are integral parts of the control

panels & displays with indicating lamps & push buttons.

SOLAR PANELS

Photovoltaic cells installation done by various contractors to preserve aesthetics by placing electrical junction boxes and combiner boxes under PV modules. Solar farms & roof top solar panel installation need higher IP rated Aluminium enclosures.



LOAD CELLS

Load cells manufacturers & PCB mounting integrators & Panel system integrators use higher IP rated aluminium enclosures which become housing for electronic connections.

OIL METERS

Products such as Oil meters, electronic thermometers, intelligent cooling controls use Higher IP-rated aluminium enclosures.



HIGH TORQUE BRAKES

Multi Pole - spring applied brakes are used in Passenger Lifts & escalators. Direct drives in modern Lift technology brakes with high braking torques, need IP protected aluminium enclosures.

DISPLAY KEYPAD

Display with Keypad used in the automation industry for various machines is based on the Aluminium enclosures where IP protection is the key requirement along with durability.



Our Company

Raychem RPG (P) Ltd., incorporated in 1989, is a 50:50 Joint Venture between TE Connectivity, U.S.A. (formerly Tyco Electronics) and RPG Enterprises, India.

TE Connectivity is a US\$13 Billion global provider for Solutions in Network, Transportation, Consumers and Industrial for over 50 years.

RPG Enterprises, an establishment of over 30 years, is one of India's fastest growing business groups with turnover of US\$ 3 Billion. The group has more than fifteen companies managing diverse business interests in the areas of Automotive Tyres, Infrastructure, IT and Specialty including Pharmaceuticals, Power Ancillaries & Plantations.



Raychem RPG 
ENGINEERING GROWTH • PIONEERING EXCELLENCE

GREAT PLACE TO WORK Best Companies to Work for 2015 India 



Raychem RPG (P) Ltd.

Corporate Office

RPG House, 463, Dr. A. B. Road, Worli,
Mumbai - 400030
Tel. : +91 22 24937485 / 24937486
Fax : +91 22 24938879

Vasai Factory

1,62, M.G. Rd., Near Bharat Petroleum Pump,
Off. Western Express Highway, P. Satavali, Bassein,
Taluka Vasai, Dist. Palghar
Tel. : +91 250 3057500
Fax : +91 250 2480046

Email : raychem@raychemrpg.com
www.raychemrpg.com



(A TE-Connectivity - RPG Enterprises JV)